

Ku-ring-gai High School

Information for parents, carers, students and staff
October 2018



A project is underway for Ku-ring-gai High School. The project will involve construction of a new multipurpose hall and refurbishment of some of the school's teaching spaces.

THE UPGRADE FOR
KU-RING-GAI HIGH
SCHOOL IS IN THE
**Development
Approval
Process**

PHASE

KU-RING-GAI
HIGH SCHOOL MAIN
CONSTRUCTION WORKS
TO BEGIN

EARLY 2019

COMPLETION OF THE
UPGRADE EXPECTED

MID 2020

Ku-ring-gai High School Upgrade

A project is underway at Ku-ring-gai High School. The project will involve construction of a new multi-purpose hall and refurbishment of some of the school's teaching spaces.

Progress summary

The design is completed for the multi-purpose hall.

Next steps

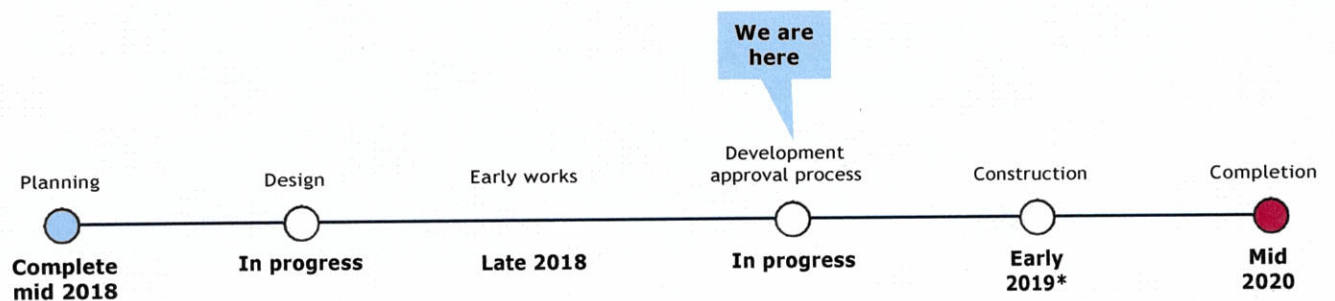
A development application and preparation for the construction tender is underway.

Site signage will be installed at site and early works will start in late 2018.

Main construction works are planned to start early 2019 with the completion of the upgrade expected mid 2020.

Notifications about the progress of the upgrade will be mailed out to the school catchment area and signage will be placed on perimeter fencing.

The NSW Government is spending \$6 billion over four years to deliver more than 170 new and upgraded schools. This includes an additional \$160 million in 2018/19 as part of the record \$747 million maintenance investment announced last year. This is the biggest investment in public school infrastructure in the history of NSW.



* Subject to planning approvals



Artists render of the new Ku-ring-gai High School Multi-Purpose Hall.

Frequently Asked Questions

Who will be impacted by early planning works?

There will be minimal disruption to the school community during early planning works. A construction site will be established within the school grounds and safety fencing will be used to separate students from the construction area. The site will have its own entrance for vehicle access, deliveries and workers.

How will the entry/exit be managed during construction works?

The safety of our students, staff and visitors is of the highest priority. Planned entry and exit locations during construction will be in accordance with Development Application conditions.

Where will the new multi-purpose hall be located?

The site within the school was selected as it provides good access for visitors and mitigates bushfire risk - other options were considered however required substantial vegetation modification and tree removal. The proposed location has the least impact on natural vegetation and will be in accordance with the approved Development Application.

What has been decided about the Bini Dome?

The Ku-ring-gai High School upgrade considered existing property and assets. The Bini Dome is part of the project scope and is currently under review.

When will work start and finish?

Subject to planning approvals, construction of the new facilities is expected to start in early-2019 and is expected to be completed by mid 2020.

How will you manage traffic and noise during construction?

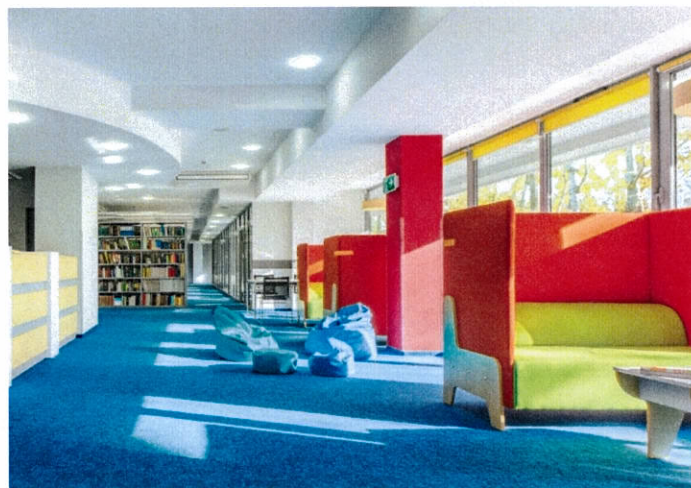
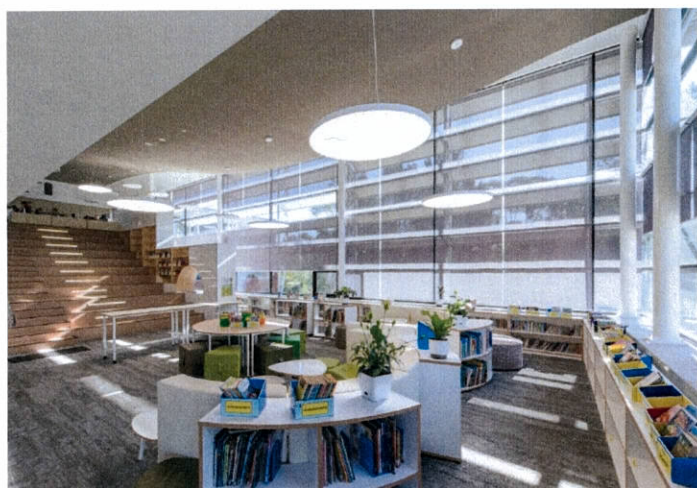
School Infrastructure NSW is working closely with the Principal and staff to reduce disruption to students and learning as much as possible. The Development Application (DA) will require:

- A Statement of Environmental Effects (SEE)
- Site survey and analysis
- Traffic, noise and construction management studies
- Other plans such as landscape or drainage plans
- Specific technical reports required by State agencies

School Infrastructure NSW will notify the school community when the project DA is on exhibition so you can have your say.

How can I find out what is happening as the project progresses?

School Infrastructure NSW will continue to work closely with the school community by sharing regular updates as the project progresses.



These images are an example of innovative learning spaces we are building for students across NSW.



Artist render Ku-ring-gai High School hall interior

Working with us

Our commitment to act in the best interests of our stakeholders and the local community is at the forefront of our work.

We know the decisions we make will have a direct impact on our students, parents and carers, our staff as well as local communities.

We will endeavour to keep the local school community and residents informed which will include, but not limited to, school and community flyers, information booths, and website updates.

Stay informed



Information booth

Information booths will continue to be held during the construction phase.



Website

Stay up to date by visiting the School Infrastructure NSW website schoolinfrastructure.nsw.gov.au



Email

Contact the Community Engagement team by emailing schoolinfrastructure@det.nsw.edu.au



Phone

Contact us between 9am-5pm, Monday to Friday on 1300 482 651